



 **LEDPROCENTER**  
ศูนย์กลางให้บริการ LED ที่ดีที่สุดในประเทศไทย

Digital  
Display  
Solution



WE  
IMAGINE  
DESIGN  
MANUFACTURE

DIGITAL  
DISPLAY  
SOLUTIONS

# Solutions



**Retail**



**Transportation**



**Corporate**

	<b>Shoes</b>	<b>1</b>
	<b>Handbag</b>	<b>1</b>
	<b>Apparel</b>	<b>2</b>



# Inno- vation

We push the boundaries of innovation to drive digital evolution through our technologies.

We provide commercial display solutions for different industries



Medical



Education



Hospitality



4K

We are focusing on 4K UHD display solutions. Display beyond your imagination.



5G

5G is coming. We are discovering new display solutions with network updatation.



AI

We are the pioneer of AI application in digital display solution. Display more intelligent.

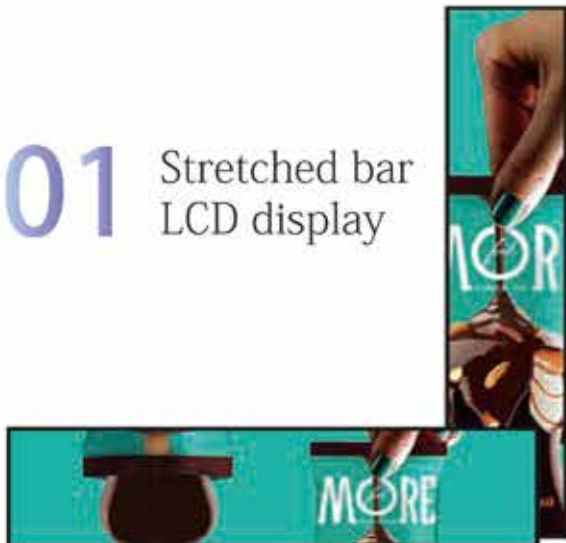


Interaction

Interactive and immersive display is popular. Young people like to pay for amazing experience.

# > Contents

## 01 Stretched bar LCD display



## 03 Digital A board



## 05 Digital poster



## 07 High brightness window display

# 09-18

- Double-sided Displays
- Interactive Whiteboard
- Floorstanding Digital Signage
- Video Wall
- 4K Android media player



# 19-30

- Wall mounted advertising display
- Outdoor Digital Signage
- Self-order Kiosk
- Touch kiosk
- Open frame LCD display
- Magic mirror display

# 31-38

- Table top Lcd display
- Transparent LCD Display
- Content Management System
- Case show





# Stretched Bar LCD Display

## FEATURES



Special stretched  
screen size



High brightness  
panel



For smart  
shop solution



CMS  
support



23"



24"



28"



35"



38"

## DIMENSIONS ( W×H×D mm)

19" : 495×114×46

35" : 892×60×15

21" : 546×63×36

38" : 958×308×48

23" : 597×60×16

43" : 1115×231×47

24" : 616×138×46

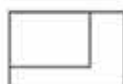
47" : 1209×63×15

28" : 735×168×50

48" : 1218×248×47

29" : 741×240×47

88" : 2158×611×85



Hot Model : BA23W

More size : 19,21,23,24,28,29,35,  
38,43,47,48,88





# Digital A Board

HD  
4K



## FEATURES



Easy to carry



With handle  
and casters



Foldable  
design

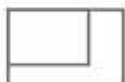


4K UHD  
screen

NEW



With  
Rechargeable Battery



Hot Model : A43R  
More size : 32in 43in

## DIMENSIONS ( W×H×D mm)

43" : 1500×605×58

32" : 1260×450×37

## Technical Specification



### Panel

**Screen size** ( inch ) : 32 / 43

**Resolution** : 1080×1920

**Viewing Angle** : 89/89/89/89

**Brightness** ( cd/m<sup>2</sup> ) : 300 / 1000 / 400 / 700

**Power supply** : AC110~240V

**Aspect Ratio** : 16:9

**Contract Ratio** : 1100 : 1

**Power consumption** : 100W



### Standalone Solution

Support Multi-language OSD: English, Chinese

Power off memory, Continuous previous play when power on

Auto loop play when power on      Timer on/off      Preset time to play

File&folder editable, rename,copy,delete file etc

Loop playback/Slide show

Built in SD Card Slot, USB Port , (HDMI Port optional)

Compatibility of multiple playback formats : MP3、WMA、JPEG、MEPG4(AVI : Div-X / X-Vid)、

MPEG2 ( DVD : VOB/MPG2 ) 、 MPEG1 ( VCD : DAT/MPG1 ) 、 MOV etc

Image format : JPG, GIF, BMP ,PNG



### Android Solution

**Operation System** : Android 5.1 / 7.1

**CPU** : RK3288 Quad Core Cortex - A17, 1.8G Hz

**RAM** : 2G      **ROM** : 16G

**WiFi** : High-performance WIFI 802.11b/g/n

**I/O Port** : USB/ SD/ LAN RJ45

“

Refee Digital A Board is the best replacements for roll-up banners, traditional writing boards and LED signs, The Digital A Board Technology supports a multitude of differing Video, Audio & Image Formats.

The economical & environmental benefits are clearly demonstrable due to the flexibility of it being an advertising medium that can be instantly updated, modified or replaced utilising the Content Management Software.

This exciting new technology is also manufactured with ergonomics at the fore-front, ergonomic features include wheels located at the base, two handle bars and a foldable design.

HD  
4K

# Digital Poster

## FEATURES



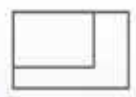
Ultra-thin  
Bezel

4K

4K  
display



CMS  
Support



Hot Model: A75FM  
More size: 75 in

# DESIRE MORE ?

Digital Poster



## Technical Specification



Panel

Screen size ( inch ): 75

Resolution : 3840\*2160

Viewing Angle : 89/89/89/89

Brightness ( cd/m<sup>2</sup> ): 1000

Aspect Ratio : 9 : 16

Contract Ratio : 4000:1



Android  
Solution

Operation System : Android 5.1 / 7.1

RAM : DDR3 2G

ROM : 16G

CPU : RK3288 Quad Core Cortex - A17, 1.8G Hz

WiFi : High-performance WIFI 802.11b/g/n

I/O Port : USB/ SD/ LAN RJ45



# DIGITAL WORLD LUXURY EXPERIENCE !

## ENJOY NOW !



# High Brightness Window Display



## [ FEATURES ]



Ultra-thin  
thickness



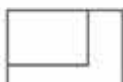
Brightness  
1500cd/m<sup>2</sup>



Up to 24 hours  
operation



Floor Standing/  
Ceiling mounted



Hot Model : A49C  
More size : 49in 55in

High Brightness Window Display

# Technical Specification



## Panel

**Screen size :** 49 in / 55in

**Resolution :** 1920×1080

**Response Time :** 6ms

**Viewing Angle :** 178°/178°

**Operational Life Cycle-mtbf :** 50000 hours

**Aspect Ratio :** 16:9

**Brightness :** 1500cd/m<sup>2</sup>

**Contract Ratio :** 4000 :1

**Backlight Configuration :** Direct LED



## Android Solution

**Operation System :** Android 5.1 / 7.1

**RAM :** 2G

**WiFi :** High-performance WIFI 802.11b/g/n

**I/O Port :** USB/ SD/ LAN RJ45

**CPU :** RK3288 Quad Core Cortex - A17, 1.8G Hz

**ROM :** 16G



## Micro-Controller

**Ambient light sensor :** Yes

**Temperature control :** Yes



“

Refee high brightness window display operates at high brightness levels up to 1,500 cd/m<sup>2</sup>, combined with an optical filter to guarantee an impressive viewing experience even through polarized sunglasses, automatically adjusting to suit ambient light conditions,

The programmable light sensor delivers eye pleasing luminosity levels whilst minimizing unnecessary power usage, the best way to attract and engage more of your target consumers.

# Double-sided Displays

# Double-sided Displays



HD  
4K

## FEATURES

  
1.98cm  
Ultra-thin

  
4K  
display

  
Double  
sided

  
CMS  
Support



Hot Model: A55CM A55FM  
More size: 55 in

## DIMENSIONS ( W×H×D mm)

A55FM 55" : 860×1950×500

A55CM 55" : 850×1800×19.5

Double-sided Digital signage

# Technical Specification



Panel

Screen size ( inch ): 55

Aspect Ratio : 16:9

Resolution : 3840\*2160

Contract Ratio : 1400:1

Viewing Angle : 89/89/89/89

Brightness ( cd/m<sup>2</sup> ) : Side A brightness:350cd/m<sup>2</sup>  
Side B brightness:700cd/m<sup>2</sup>



Android  
Solution

Operation System : Android 5.1 / 7.1      RAM : DDR3 2G      ROM : 16G

CPU : RK3288 Quad Core Cortex - A17, 1.8G Hz

WiFi : High-performance WIFI 802.11b/g/n      I/O Port : USB/ SD/ LAN RJ45



“

Refee Double Sided kiosk with UHD 4K screen ,Ultra narrow bezel and Slim body design only 1.98cm, Support syncplaying,easy eye-catching to help customer to know more product information .It's a good choose For super market, shopping mall, Entertainment and leisure places etc.

Refee Hanging Double-Sided Window Displays designed for ceiling mounted, Save space for stores, widely used in window display, can release commercial, financial and entertainment information etc.





MAKE  
MEETING  
MORE  
INTELLIGENT?

WITH **Refee**  
INTERACTIVE  
WHITEBOARD!



WIRELESS PROJECTION SCREEN

Interactive Whiteboard

# Technical Specification



## Panel

**Screen size ( inch ):** 65  
**Resolution :** 3840\*2160  
**Contract Ratio :** 1400:1  
**Power input :** 100 ~ 240V 50/60HZ

**Aspect Ratio :** 16 : 9  
**Brightness ( cd/m<sup>2</sup> ):** 400  
**Viewing Angle :** 89/89/89/89  
**Display Area(mm) :** 1428.48 (H)×803.52(V)mm



## Android Solution

**Operation System :** Android 5.1  
**GPU :** Mali450MP4 (4+2) 600MHz  
**RAM :** 2G      **ROM :** 8G  
**Media :** MPG, AVI, MKV, FLV, MP4, TS

**CPU :** Android 5.0, Cortex A5, 1.4GHz  
**WiFi :** WIFI 802.11b/g/n  
**USB :** 1 input      **LAN :** RJ45  
**Audio :** Mp3, WMA      **Photo :** JPEG, BMP, GIF



## PC Solution

**CPU :** Intel i3 / i5 / i7      **RAM :** 4 GB      **ROM :** 128G SSD  
**Operating System :** Windows 7 / 8 / 10      **Graphics Hardware :** Integrated with CPU  
**Sound card :** Integrated      **Support Multi-language OSD :** English, Chinese



## interface

### Windows interface :

**LAN Input :** 1      **VGA Output :** 1      **HDMI Output :** 1  
**USB :** USB2.0\*2, USB 3.0\*2      **Audio :** 1 × LINE-OUT & MIC-IN

### Front interface:

**HDMI Input :** 1      **PC USB Input :** 1      **TV USB Input :** 1      **TOUCH-USB :** 1

### Android interface :

**HDMI Input :** 1      **VGA Input :** 1      **PC-Audio Input :** 1      **YPBPR Input :** 1  
**AV Input :** 1      **AV Output :** 1      **USB 3.0 :** 2      **RF Input :** 1  
**Touch-USB :** 1      **RS232 :** 1      **LAN Input :** 1      **Earphone Output :** 1



## Intelligent Writing



## Remote Meeting

# Floor Standing Digital Signage



## FEATURES



UHD 4K  
screen



Slim  
body design



Reliable  
stand



CMS  
support



Hot Model : A43F-01  
More size : 43,49,55,65

## DIMENSIONS ( W×H×D mm)

43" : 1804×635×42

49" : 1855×699×42

55" : 1904×762×46

65" : 2104×881×47

## Technical Specification



### Panel

**Screen size ( inch ) :** 43 / 49 / 55 / 65

**Aspect Ratio :** 16:9

**Resolution :** 1920x1080

**Contract Ratio :** 1400:1

**Power supply :** AC110 ~ 240V

**Viewing Angle :** 89/89/89/89

**Brightness ( cd/m<sup>2</sup> ) :** 330 / 350 / 400 / 360



### Android Solution

**Operation System :** Android 5.1 / 7.1

**RAM :** 2G

**ROM :** 16G

**CPU :** RK3288 Quad Core Cortex - A17, 1.8G Hz

**WiFi :** High-performance WIFI 802.11b/g/n

**I/O Port :** USB/ SD/ LAN RJ45



### PC Solution

**CPU :** Intel i3 / i5 / i7

**Graphics Hardware :** Integrated with CPU

**RAM :** 4 GB /8GB DDR3 1600 RAM

**HDD :** SDD msata 128GB

**Operating System :** Windows 7 / 8 /10

**Support Multi-language OSD :** English, Chinese



### Standalone Solution

Power off memory, Continuous previous play when power on

Auto loop play when power on ; Timer on/off ; Preset time to play

Auto copy function : U Disk automatically copy content to SD card,

File&folder editable, rename,copy,delete file etc.

Built in SD Card Slot, USB Port , (HDMI Port optional)

Compatibility of multiple playback formats : MP3, WMA, JPEG, MPEG4(AVI : Div-X / X-Vid),

MPEG2 ( DVD : VOB/MPG2 ) , MPEG1 ( VCD : DAT/MPG1 ) , MOV etc

Image format : JPG, GIF, BMP ,PNG

“

Referee floor standing digital signage is a high quality commercial display, luxuriously-housed they come with tempered glass,high end components, excellent workmanship, comes with an all-in-one PC, making it a complete solution with easy installation, it's a compact eye-catching tool to help shoppers make quicker and more informed choices.



## Video Wall



### FEATURES



Ultra narrow  
bezel



Wireless  
Projection Screen



High performance  
CPU



7x24 hours  
Working

Video Wall

## Technical Specification



Panel

Screen size ( inch ): 46 / 49 / 55

Resolution : 1920x1080

Brightness ( cd/m<sup>2</sup> ) : 500 / 450 / 500

Contract Ratio : 4000:1 / 3000:1 / 4000:1

Reaction time : 6ms < 8ms < 8ms

Display area : 1018.08H×572.67V 1073.8H×604V 1209.6H×680.4V

Power consumption : < 190W < 250W < 250W

Aspect Ratio : 16:9

Viewing Angle : 89/89/89/89

Backlight : LED

Colour Brightness : 16.7M

Infrared remote control : YES

Bezel

1.7 mm



Support 7×24 hours working  
High reliable components and high heat  
dissipation body design.

HD  
4K

# 4K Android Media Player



## FEATURES

4K

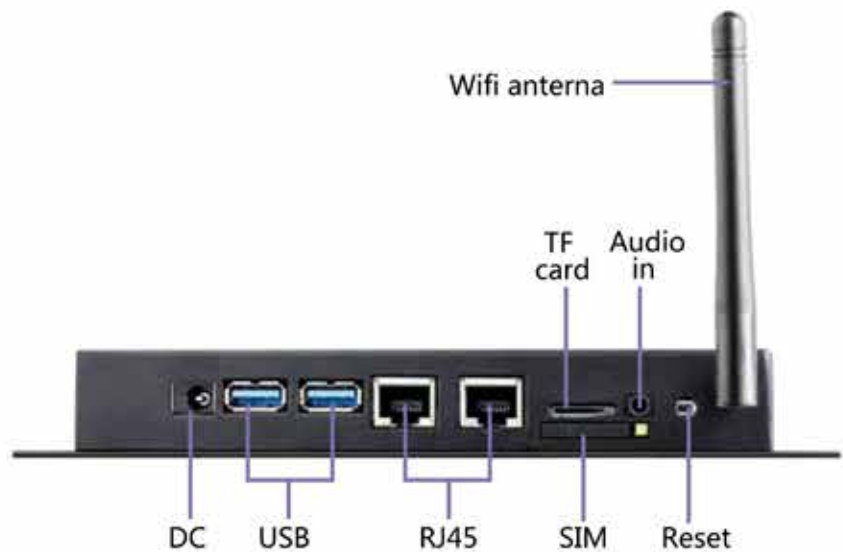
4K decoding  
definition



Commercial  
Grade

60HZ

Supported max  
4KX 60HZ



4K Android Media Player

# Technical Specification



## Android Solution

<b>Chipset :</b> RTD1295	<b>RAM :</b> 1G DDR3
<b>ROM :</b> 16G NAND Flash	<b>CMS :</b> Supported
<b>Operation system :</b> Android5.1	<b>Timer on/off :</b> Supported
<b>L/R audio output :</b> 1 RCA	<b>Input voltage :</b> DC12V-2000ma
<b>Signal Output :</b> HDMI output*2, TF card slot*1, RJ45*1, USB*2, wifi	



## Video Decoding

(H.265)/HEVC supported max 4KX2K@60fps  
(H.264)/HEVC supported max 4KX2K@30fps  
VP9 supported max 4KX2K@60fps  
VP6/8 supported max 4KX2K@30fps  
MPEG1 supported max 1080P60fps  
MPEG4 supported max 1080P60fps  
VC-1 SP@ML,MP@HL,AP@LO-3,suported max 1080P60fps



## Others

Video format	WMV,MKV,TS,ASF,RMP4,AVI etc.
Audio decoding	MPEG1/2,LPCM,PCM,FLAC,AAC,OGG,MP3
Dimension	156(W)X90(H)X32(T)mm
Woring temperature/Humidity	0°C~50°C/20%~80%
Storage temperature/Humidity	-10°C~60°C/5--95%
Woring temperature/Humidity	0°C~50°C/20%~80%



Referee Android media player integrated Android system and 4K decoding function. Not only will you enjoy a seamless user experience, but you can also manage the device remotely from your web browser through CMS.

With a 4K resolution, not a single detail will be missing. Supports HTML5, POPAI, and W3C SMIL for dynamic content. Wireless functionality for easy installation in remote locations. 16GB storage ensures local reliable playback of content



# Wall Mounted Advertising Display



## FEATURES



VESA Standard Wall Mount



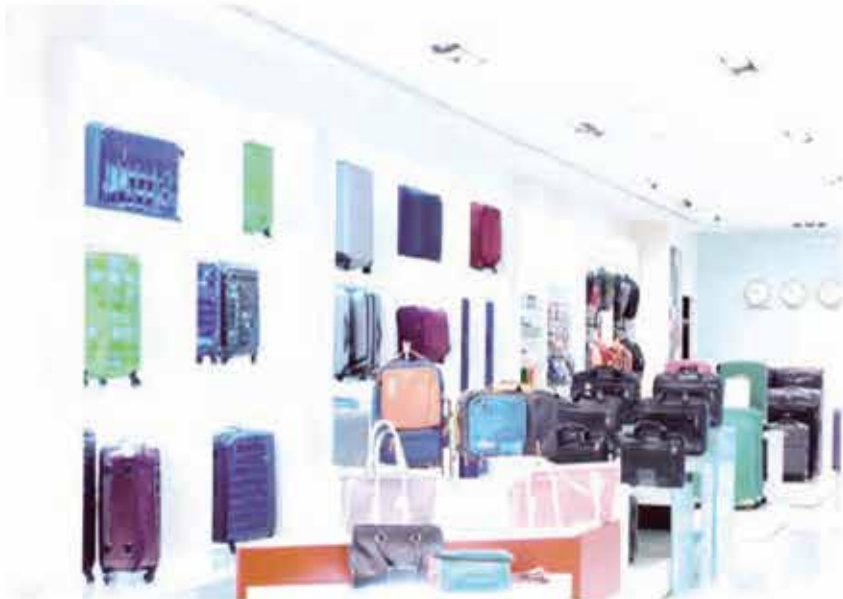
Precision Slim Design



IPS Panel

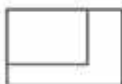


Portrait/landscape orientation



## DIMENSIONS ( W×H×D mm)

10.1" : 174×217×33	32" : 758×452×70
13.3" : 355×278×35	43" : 1011×67×77
15.6" : 403×252×33	49" : 1141×672×77
18.5" : 471×292×38	55" : 1285×680×81
21.5" : 537×328×38	65" : 1504×882×81



Hot Model : A15W

More size : 10.1,13.3,15.6,18.5,  
21.5,32,43,49,55,65

## Technical Specification



### Panel

**Screen size ( inch ):** 10.1 / 13.3 / 15.6 / 18.5 / 21.5      **Aspect Ratio :** 16:9  
**Resolution :** 1280×800/1920x1080/1920x1080/1366x768/1920x1080  
**Brightness ( cd/m<sup>2</sup> ):** 280 / 280 / 280 / 280 / 250  
**Contract Ratio :** 1000:1 / 700:1 / 800:1 / 1000:1 / 1000:1  
**Power supply :** AC110~240V      **Viewing Angle :** 85/85/85/85



### Panel

**Screen size ( inch ):** 32 / 43 / 49 / 55 / 65      **Aspect Ratio :** 16:9  
**Resolution :** 1920x1080  
**Brightness ( cd/m<sup>2</sup> ):** 280 / 280 / 280 / 280 / 250  
**Contract Ratio :** 1000:1 / 700:1 / 800:1 / 1000:1 / 1000:1  
**Power supply :** AC110~240V      **Viewing Angle :** 85/85/85/85



### Android Solution

**Operation System :** Android 5.1 / 7.1      **RAM :** 2G      **ROM :** 16G  
**CPU :** RK3288 Quad Core Cortex - A17, 1.8G Hz  
**WiFi :** High-performance WIFI 802.11b/g/n      **I/O Port :** USB/ SD/ LAN RJ45



### PC Solution

**CPU :** Intel i3 / i5 / i7      **Graphics Hardware :** Integrated with CPU  
**RAM :** 4 GB /8GB DDR3 1600 RAM      **HDD :** SDD msata 128GB  
**Operating System :** Windows 7 / 8 /10  
**Support Multi-language OSD :** English, Chinese



### Standalone Solution

Power off memory, Continuous previous play when power on  
Auto loop play when power on ;    Timer on/off ;    Preset time to play  
Auto copy function : U Disk automatically copy content to SD card,  
File&folder editable, rename,copy,delete file etc.  
Built in SD Card Slot, USB Port , (HDMI Port optional)  
Compatibility of multiple playback formats : MP3, WMA, JPEG, MPEG4(AVI : Div-X / X-Vid),  
MPEG2 ( DVD : VOB/MPG2 ) , MPEG1 ( VCD : DAT/MPG1 ) , MOV etc  
Image format : JPG, GIF, BMP ,PNG

“

Referee wall mounted advertising display is designed for public places, it's a brilliant method to share more specifications and draw more attention to your highlighted products.

It's a perfect solution for enhancing customer experiences and improve efficiencies. Flexible installation in vertical / horizontal and different inch-sizing can satisfy multiple advertising needs.



## Outdoor Digital Signage

### FEATURES



IP65 Waterproof  
& dustproof



Sunlight  
Readable



Brightness  
adjustable



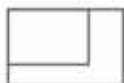
Temperature  
control



Vandal  
Proof



Antiglare  
screen



Hot Model : OA55F  
More size : 55,65

**DIMENSIONS** ( W×H×D mm)

55" 889x2264x215

## Technical Specification



### Panel

**Screen size ( inch ):** 55  
**Resolution :** 1920x1080  
**Contract Ratio :** 3000:1  
**Viewing Angle :** 89/89/89/89  
**Response time :** 8ms  
**Power input :** AC100-240V(power adaptor)

**Aspect Ratio :** 16:9  
**Brightness ( cd/m<sup>2</sup> ):** 2500  
**Power supply :** AC110 ~ 240V  
**ColourBrightness :** 16.7M  
**Waterproof :** IP65



### Android Solution

**Operation System :** Android 5.1 / 7.1    **RAM :** 4GB DDR3    **ROM :** 16GB Nand  
**CPU :** QuadCore,1.6G    **GPU :** Mali -T760 MP4@600Mhz  
**WiFi :** High-performance WIFI 802.11b/g/n  
**USB :** 2pcs    **LAN :** MP3,WMV  
**Video :** MPG, AVI,MKV,FLV,MP4,TS    **Audio :** Mp3, WMA    **Photo :** JPEG,BMP,GIF\*



### PC Solution

**CPU :** Intel i3 / i5 / i7    **Graphics Hardware :** Integrated with CPU  
**RAM :** 4 GB /8GB    **HDD :** 128GB SSD  
**Operating System :** Windows 7 / 8 / 10  
**Support Multi-language OSD :** English, Chinese  
**Graphics :** Integrated HD Graphics



### Interface

**USB :** USB 2.0 x 4    **RJ45 :** Ethernet x 1  
**HDMI :** HDMI output x 1    **VGA :** VGA output x 1  
**MIC :** MIC-IN x 1    **LINE-OUT :** LINE-OUT x 1

“

Refee provides an advanced solution for outdoor application that is certified to withstand the elements and provide excellent visibility around the clock, in any light ;  
And provide superior performance, reliability, and the best visual image quality with the smart temperature control system, ambient light sensor and anti reflective glass.

# Self-Order Kiosk

## FEATURES



Save ordering time



Improve table turnover rate



Reduce error rate



Save labor cost



## Customized Function



2D Barcode scanner



Thermal printer



Face recognition camera



POS Machine



Card reader



Pin pad



Hot Model : A32W1-01-CT  
More size : 32

## DIMENSIONS ( W×H×D mm)

32" : 1167×529×140

Self - Order Kiosk

## Technical Specification



### Panel

**Screen size ( inch ) :** 32  
**Resolution :** 1920x1080  
**Contract Ratio :** 1400:1  
**Power supply :** AC 100~240v 50/60HZ  
**Out put :** HDMI\*1,VGA\*1,RJ45\*1,USB\*4,Wifi LAN802.11n (4G Module optional)  
L/R Audio output 1 RCA X2  
**Speaker :** 2×5W(8Ω) **Display Area :** 698.6(W)×392.8(H)  
**Touch screen :** 10points capacitive touch screen



### Android Solution

**Operation System :** Android 5.1 / 7.1 **RAM :** 2G **ROM :** 16G  
**CPU :** RK3288 Quad Core Cortex - A17, 1.8G Hz  
**WiFi :** High-performance WIFI 802.11b/g/n **I/O Port :** USB/ SD/ LAN RJ45



### PC Solution

**CPU :** Intel i3 / i5 / i7 **Graphics Hardware :** Integrated with CPU  
**RAM :** 4 GB DDR3 1600 RAM **HDD :** SDD msata 128GB  
**Operating System :** Windows 7 / 8 / 10



## The Secret of Growth

We provide digital display solutions for restaurants to promote your business growth, including in-window screens, ordering kiosks and weather-targeted product displays.

“

Referee self-order kiosk can provide a one-stop solution for ordering, queuing, payment, advertising and products management, it is a quality choice to enhance customer experience and improve efficiency and flexibility in the food services industry.

Digital display panels Improve your queue management whilst reduce waiting times, features include menu suggestions, infotainment and interactive self-ordering kiosks. Collectively these features combine to capture the attention of your customers as they make their choice.

# Touch Everywhere , Kiosk Everywhere .

## FEATURES



interactive  
experience



Tempered  
glass



Portrait/landscape  
orientation



LED  
backlight



- Shopping mall
- Hospital
- Parking

### DIMENSIONS ( W×H×D mm)

21.5" : 1189×471×216

32" : 964×768×463

43" : 1011×1061×599

49" : 1141×1077×483

55" : 1285×1098×483

65" : 1504×1124×483



Hot Model : A55K1-RT  
More size : 21.5,32,43,49,55,65

## Technical Specification



### Panel

**Screen size ( inch ):** 21.5 / 32 / 43 / 55 / 55 / 65

**Resolution :** 1920x1080

**Aspect Ratio :** 16:9

**Viewing Angle :** 89/89/89/89

**Contract Ratio :** 1400:1

**Brightness ( cd/m<sup>2</sup> ):** 250 / 300 / 300 / 330 / 350 / 360



### Android Solution

**Operation System :** Android 5.1 / 7.1

**RAM :** 2G

**ROM :** 16G

**CPU :** RK3288 Quad Core Cortex - A17, 1.8G Hz

**WiFi :** High-performance WIFI 802.11b/g/n

**I/O Port :** USB/ SD/ LAN RJ45



### PC Solution

**CPU :** Intel i3 / i5 / i7

**Graphics Hardware :** Integrated with CPU

**RAM :** 4 GB / 8GB DDR3 1600 RAM

**HDD :** SDD msata 128GB

**Operating System :** Windows 7 / 8 / 10



We provide amazing digital display solutions for shopping mall to improve experience, including touch kiosk, floorstanding digital signage and interactive displays.

“

Refee Touch Kiosk is designed for areas with heavy footfall providing access to information, entertainment and commerce applications, unique requirements have been factored into its application and design to ensure it meet a broad spectrum of customer demands.

Whether it's created to advertise, inform, or entertain, an advertising display monitor needs a ruggedized commercial-grade display designed for 24/7 applications. Kiosks often get consistent, hard use, and this needs to be considered when creating a display that can withstand the test of time. Our interactive kiosk displays are used to build stylish and functional interactive kiosks with our small touch monitors that provide a superior customer experience, functionality, and reliability.



# Open Frame LCD Display



## FEATURES



Open frame



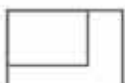
Plug and play



Embedded design



Easy installation



Hot Model : S07NB  
More size : 7,10.1,15.6

## DIMENSIONS ( W×H×D mm)

7" : 189×104×24    10.1" : 239×124×29  
15.6" : 386×238×30

## Technical Specification



### Panel

**Screen size** ( inch ) : 7 / 10.1 / 15.6

**Aspect Ratio** : 16:9

**Resolution** : 1024×600 / 1280×800 / 1920×1080

**Viewing Angle** : 70/70/50/70(85/85/85/85) (89/89/89/89)

**Contract Ratio** : 500:1 / 1000:1 / 1000:1

**Brightness** ( cd/m<sup>2</sup> ) : 250

**Power Supply** : 12V/2A



### Standalone Solution

Support Multi-language OSD: English, Chinese

Power off memory, Continuous previous play when power on

Auto loop play when power on ; Timer on/off ; Preset time to play

Auto copy function : U Disk automatically copy content to SD card,

File&folder editable, rename, copy, delete file etc ; Loop playback/Slide show

Built in SD Card Slot, USB Port , (HDMI Port optional)

Compatibility of multiple playback formats : MP3, WMA, JPEG, MPEG4(AVI : Div-X / X-Vid),

MPEG2 ( DVD : VOB/MPG2 ) , MPEG1 ( VCD : DAT/MPG1 ) , MOV etc

Image format : JPG, GIF, BMP ,PNG



### Android Solution

**Operation System** : Android 5.1 / 6.0

**RAM** : 2G

**ROM** : 8G

**CPU** : Quad Core Cortex

**WiFi** : High-performance WIFI 802.11b/g/n

**I/O Port** : USB/ SD/ LAN RJ45

“

Referee open-frame LCD display comes in a range of sizes from 7" to 84". The Digital Displays are contained in a durable moulded plastic or metal cycle-enclosure, the units support rear VESA mounting as well as having an integrated open frame chassis for easy installation on to the final advertising display stand.

Our high quality, low cost, eco-friendly digital displays are available with various options to suit your advertising requirements.

# Magic Mirror



## FEATURES



FHD LCD screen



Mirror effect



Motion sensor



on/off



Motion Sensor inactivated



Motion sensor activated



Hot Model : MS14D2  
More size:13.3,21.5,43,49,55

**DIMENSIONS** ( W×H×D mm)  
13.3" : 384×205×27

Magic Mirror Display

## Technical Specification



### Panel

**Screen size** ( inch ): 13.3  
**Resolution** : 1920x1080  
**Power supply** : 12V 2A  
**Brightness** ( cd/m<sup>2</sup> ): 280  
**Power consumption** : 30 W

**Aspect Ratio** : 16:9  
**Contract Ratio** : 700:1  
**Viewing Angle** : 85/85/85/85  
**Response time** : 8ms  
**Colour Depth** : 16.7M



### Standalone Solution

Auto play when power on ;    Timer on/off ;    Preset time play  
File&folder editable, rename,copy,delete file etc.  
Loop playback/Slide show ;    Rolling words on the screen  
background music modes,image modes,video modes (optional)  
Support Video: MPG,MPEG-1,MPEG-2,MPEG-4,AVI,MKV,FLV,TS,VOB,TS  
Support Audio: MP3,WMV ;    Support Photo: JPEG,BMP,GIF  
Build-in SD card slot, USB port (HDMI& VGA interface optional)  
Built-in clock & calendar function ;    Security lock protect media content

Magic  
Mirror  
WILLOR  
MAGIC



Design  
For  
Elegance

“

Magic mirror technology provides multiple functionality all-in-one. Real mirror application coupled with screen display technology creates a dual-functioning experience.

A normal screen display is operational while activated or alternatively a full mirror is on display while deactivated. It creates a more engaging and informative customer experience by combining the power and reach of digital signage with the visual clarity of a standard mirror.

# 15.6inch Table-top LCD Display



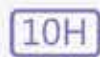
## [ FEATURES ]



**Slim design  
easy to move**



**10000Ma  
rechargeable battery**



**Support  
10 Hrs playing**



**CMS  
Support**



Hot Model : A15DC01

**DIMENSIONS ( W×H×D mm)**

15.6" : 375×200×285

## Technical Specification



### Panel

**Screen size ( inch ):** 15.6      **Aspect Ratio :** 16:9  
**Resolution :** 1920x1080      **Contract Ratio :** 800:1  
**Power supply :** AC110 ~ 240V      **Viewing Angle :** 89/89/89/89  
**Brightness ( cd/m<sup>2</sup> ):** 280



### Support Format

**Video Format :** wmv,avi,flv,rm,rmb,mpeg,ts,mp4 etc  
**Picture Format :** BMP,JPEG,PNG,GIF



### Android Solution

**Operation System :** Android 5.1 / 7.1      **RAM :** DDR3 2G      **ROM :** 16G  
**CPU :** Rockchip RK3288 quad core Cortex-A9 1.6G Hz  
**WiFi :** High-performance WIFI 802.11b/g/n      **I/O Port :** USB/ SD/ LAN RJ45



Movable  
Display

“

Refee Tabletop LCD Display with small body design, stable base ,Built in 10000 mAh lithium battery ,Can palyback 10 hours .

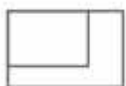
Designed for Retail Stores, Bar & Coffee Counter etc. It has been favored by many Brand since the product came out.

# Transparent LCD Display

## FEATURES

 <b>Transparent design</b>	 <b>High transmittance</b>
 <b>Multi touch</b>	 <b>CMS Support</b>

<b>Display real exhibits</b>	<b>Play advertising content</b>
<b>At the same time</b>	



Hot Model: S15TA  
More size: 15.6in ,18.5in,23in,32in

## DIMENSIONS ( W×H×D mm)

23" : 612×428×250

## Technical Specification



Panel

**Screen size ( inch ):** 15.6 / 18.5 / 21.5 / 23 / 32      **Aspect Ratio :** 16:9  
**Resolution :** 1920×1080/1366×768/1920×1080/1920×1080  
**Contract Ratio :** 1000:1 / 700:1 / 800:1 / 1000:1 / 1000:1  
**Power supply :** AC110~240V      **Viewing Angle :** 85/85/85/85  
**Brightness ( cd/m<sup>2</sup> ):** 280 / 280 / 280 / 280 / 250



Android  
Solution

**Operation System :** Android 5.1 / 7.1      **RAM :** DDR3 2G      **ROM :** 16G  
**CPU :** RK3288 Quad Core Cortex - A17, 1.8G Hz  
**WiFi :** High-performance WIFI 802.11b/g/n      **I/O Port :** USB/ SD/ LAN RJ45

# Transparent LCD

# Dis- Play

# The Way



High jewelry



Ring



Watch

# Of Exquisite Elegance

“

Refee Transparent LCD Display can make the screen as transparent as glass, keep the transparency and ensure the color richness .Therefore, It can not only let users watch the exhibits behind the screen at a close distance, but also can interact with the dynamic information of the transparent screen .

It is very suitable for shopping malls to display jewelry, various high-end goods and Museum industries to display some cultural relics etc .



# Content Management System



## Easy to edit

Free content plate  
Content Playlist management  
easy to publish content



## Terminal monitoring

Terminal logistic and status monitoring  
Terminal remote control, power on/off, volume up/down

## Why CMS



## Split-Screen

Split-Screen with different video and images  
amazing displays



## Cloud platform

Advanced Cloud platform based on HTML5 protocol  
Cloud server:HK,Germany,Thailand



# Simple Steps

# To Value Your Brand



PC , Pad ,  
Mobilephone



CMS

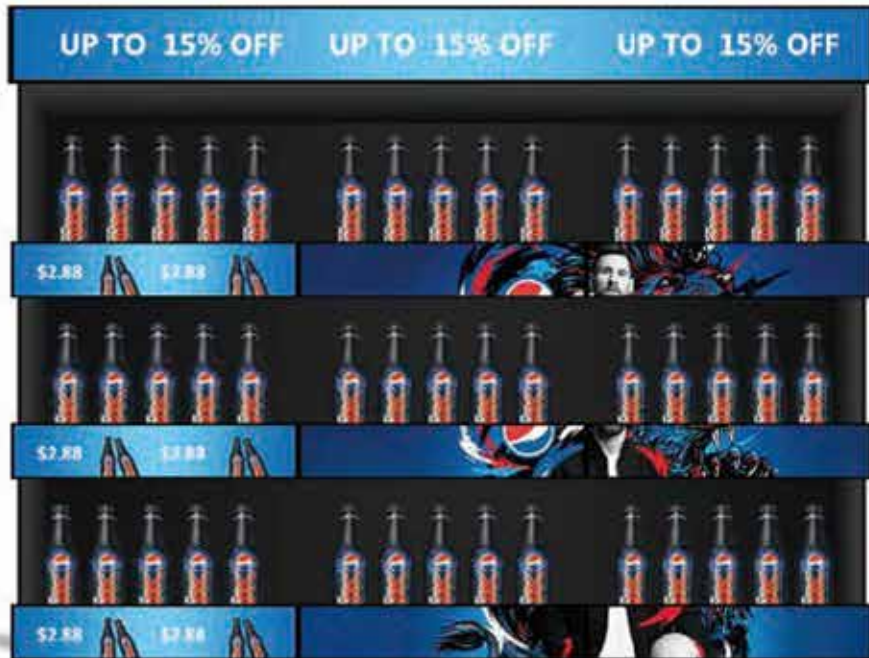


Screens



Now !  
**CMS** is available for **mobilephone** !!  
Much more convenient !!

# Case Show



Stretched Bar LCD Display Shelf

tch<sup>i</sup> 





### Continuous Innovation

We dedicate on continuous innovation. We push the boundaries of innovation to drive digital evolution through our technologies.



### Corporate Value

Referee are focusing on discovering new way to value your brand with digital display solutions. We believe in the importance of Brand Value Awareness.

